

NOTE SPEED

NoteSpeed Essentials

Directional fill-in-the-blank worksheets



Materials by
Tara Cunningham

NOTE SPEED

Instructions

Fill-in-the-blank worksheets:

The fill-in-the-blank worksheets are a great way to reinforce directional learning.

Starting with the first note, have your student write each note's name in the space provided. Notes will either move up, down, or repeat — just like in the game!

Levels 1–5 have six worksheets each, covering the lower, higher, and full ranges of the notes in that level. The first worksheet of each range will have the starting note already filled in.

Level 6 has four worksheets total, with each worksheet covering the entire range of notes from Low C to High C.

How fast can your students complete each worksheet? Encourage them to figure out the notes based on movement on the staff!

NoteSpeed is a fast, competitive, and hands-on card game for one or two players published by CNT Creations. It teaches the notes from Low C to High C in seven sequential levels.

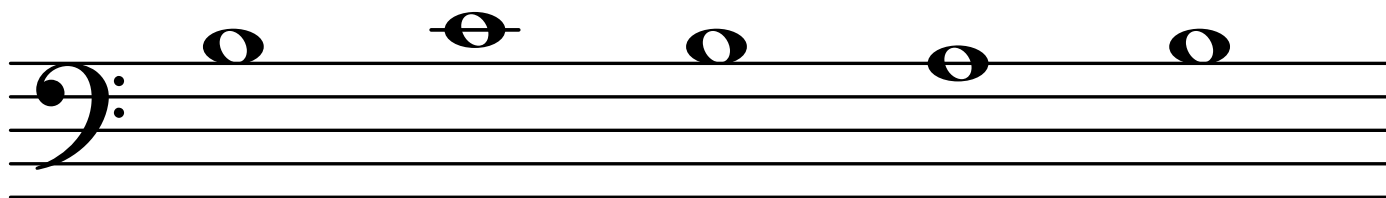
Why should I use NoteSpeed with my children or students?

- It's a fun way to learn how to read music.
- Most music students have holes in their note reading.
- It can be practiced at home individually or played with a partner.
- Flashcards are boring and time consuming.
- It teaches the natural pattern of note reading instead of by thirds or skips on the staff.

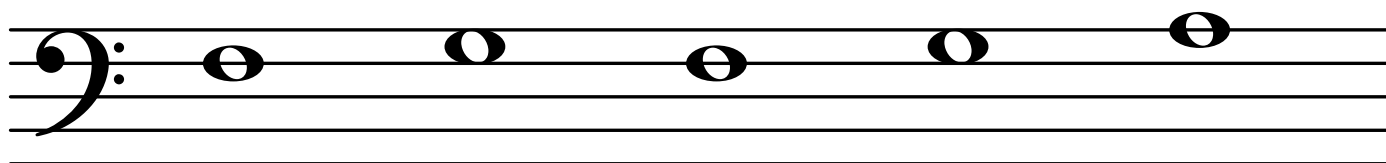
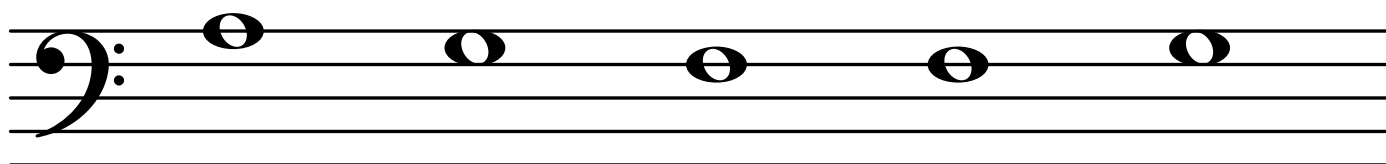
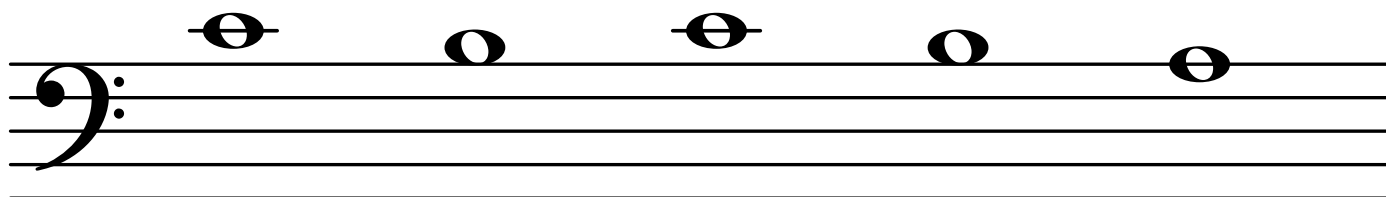
For videos and more resources, visit <https://pianopronto.com/notespeed/>

NOTE SPEED

Level One - Low



B



NOTE SPEED

Level One - Low

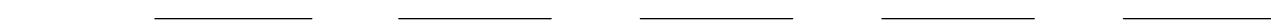
A musical staff with a bass clef. It contains five whole notes: G2 (below the first line), F2 (below the first space), E2 (below the first line), D2 (below the first space), and C2 (below the first line).



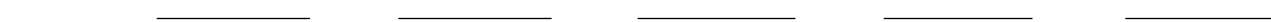
A musical staff with a bass clef. It contains five whole notes: C2 (below the first line), D2 (below the first space), E2 (below the first line), F2 (below the first space), and G2 (below the first line).



A musical staff with a bass clef. It contains five whole notes: G2 (below the first line), F2 (below the first space), E2 (below the first line), D2 (below the first space), and C2 (below the first line).

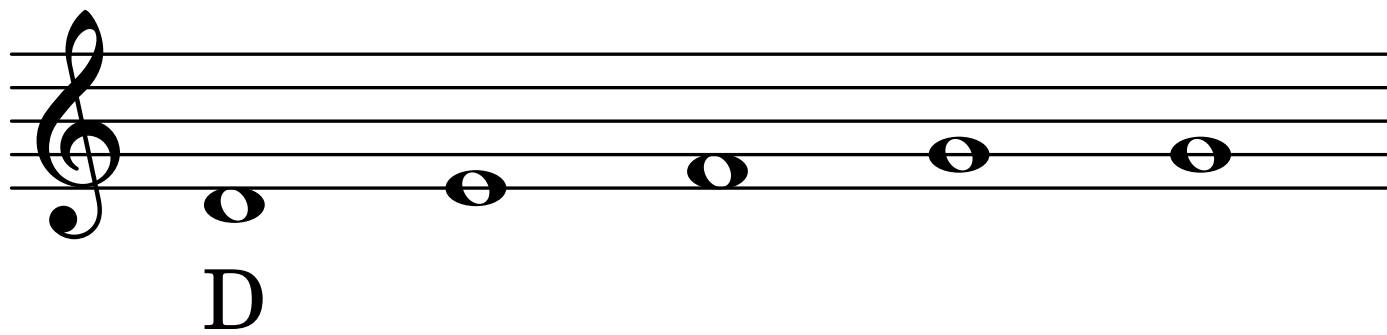


A musical staff with a bass clef. It contains five whole notes: C2 (below the first line), D2 (below the first space), E2 (below the first line), F2 (below the first space), and G2 (below the first line).

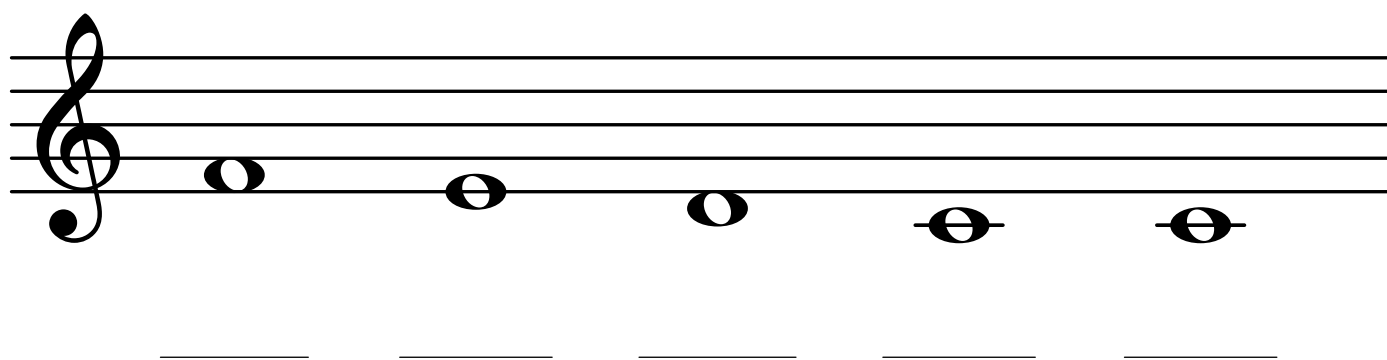


NOTE SPEED

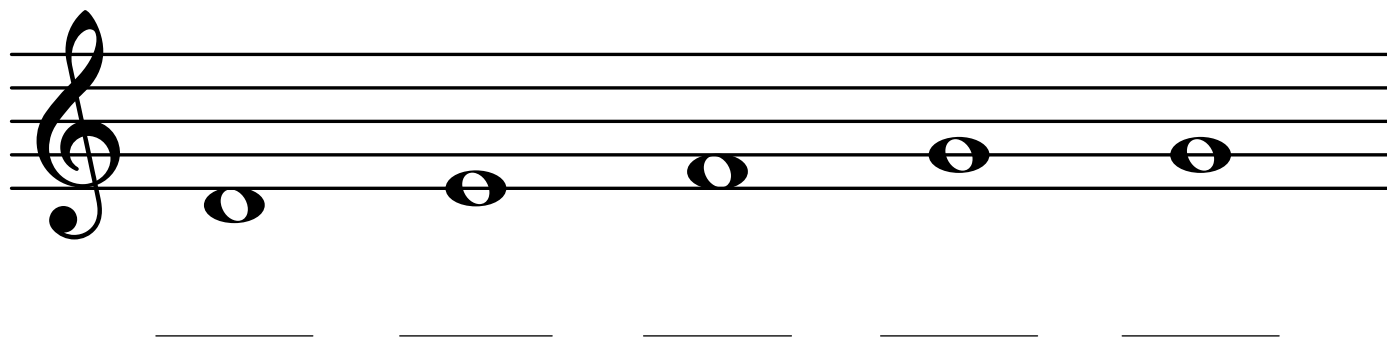
Level One - High



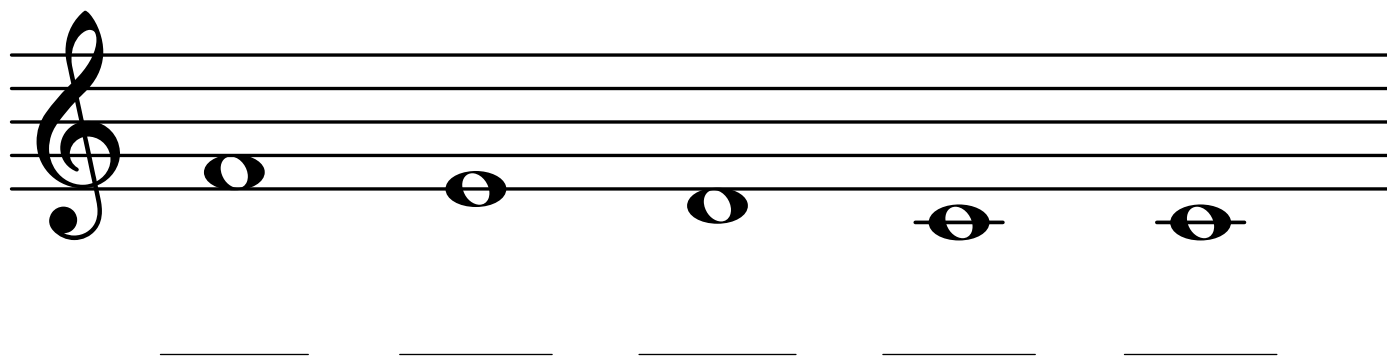
A musical staff with a treble clef. Five whole notes are placed on the second line of the staff, which is labeled 'D' below the first note. Below each note is a horizontal line for writing.



A musical staff with a treble clef. Five whole notes are placed on the second space of the staff, which is labeled 'E' below the first note. Below each note is a horizontal line for writing.



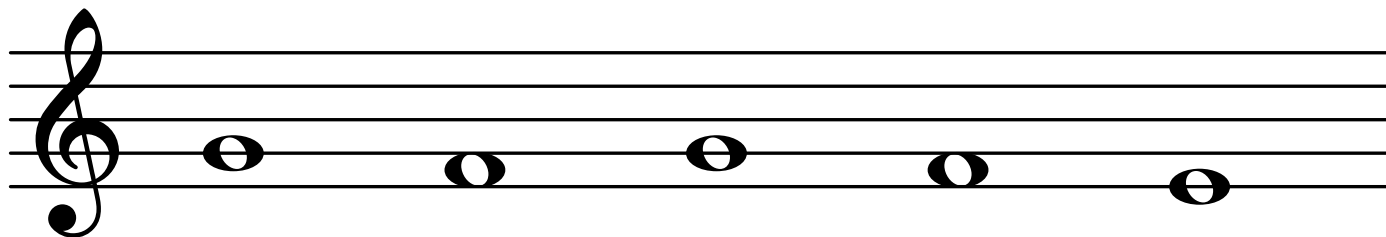
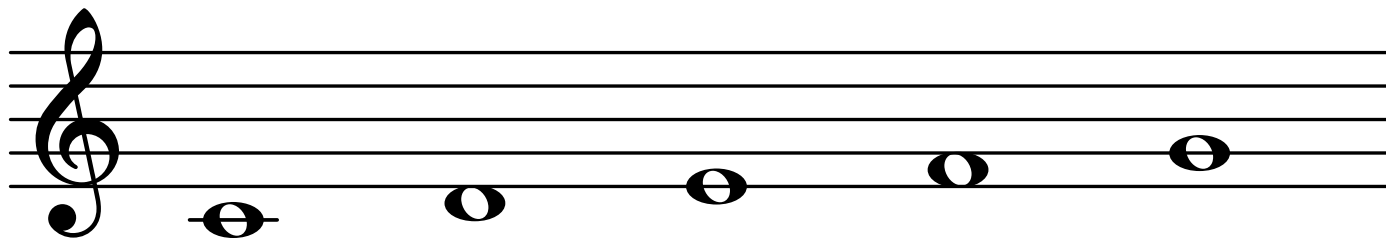
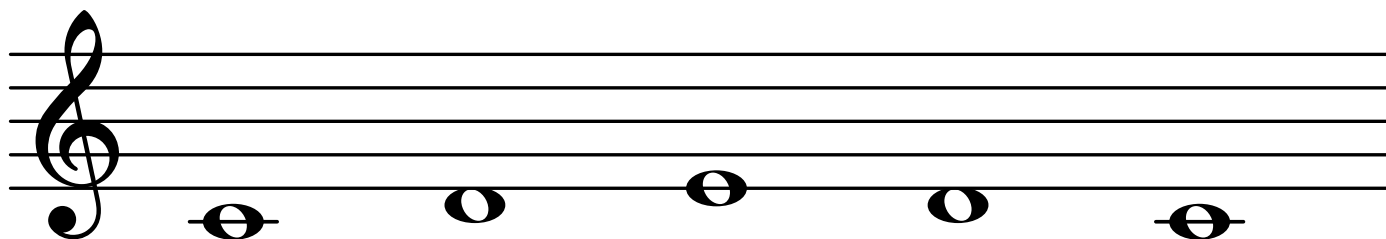
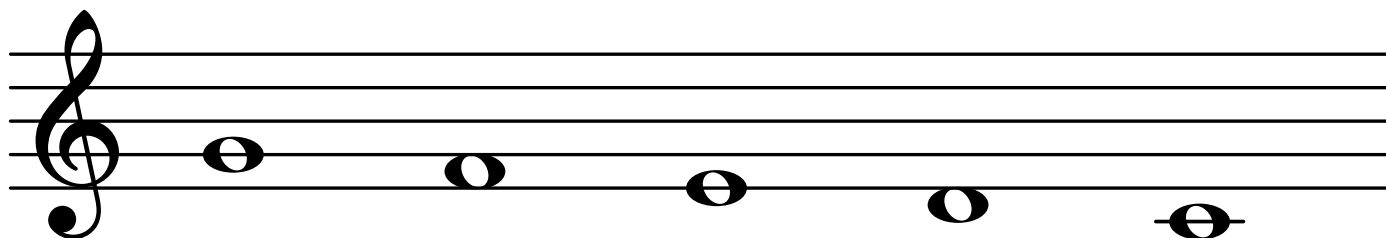
A musical staff with a treble clef. Five whole notes are placed on the third line of the staff, which is labeled 'F' below the first note. Below each note is a horizontal line for writing.



A musical staff with a treble clef. Five whole notes are placed on the third space of the staff, which is labeled 'G' below the first note. Below each note is a horizontal line for writing.

NOTE SPEED

Level One - High



NOTE SPEED

Level One - Full

A musical staff with a treble clef on the top line and a bass clef on the bottom line. Ten whole notes are written on the staff, starting on the second line (G) and moving up and down in a sequence: G, A, B, C, D, E, F, G, A, B.

G

A musical staff with a treble clef on the top line and a bass clef on the bottom line. Ten whole notes are written on the staff, starting on the second line (G) and moving up and down in a sequence: G, A, B, C, D, E, F, G, A, B.

A musical staff with a treble clef on the top line and a bass clef on the bottom line. Ten whole notes are written on the staff, starting on the second line (G) and moving up and down in a sequence: G, A, B, C, D, E, F, G, A, B.

A musical staff with a treble clef on the top line and a bass clef on the bottom line. Ten whole notes are written on the staff, starting on the second line (G) and moving up and down in a sequence: G, A, B, C, D, E, F, G, A, B.

NOTE SPEED

Level One - Full

A musical staff with a treble clef on the top line and a bass clef on the bottom line. The notes are: C4 (middle C), D4, E4, F4, G4, A4, B4, C5, B4, A4.

A musical staff with a treble clef on the top line and a bass clef on the bottom line. The notes are: C4, D4, E4, F4, G4, A4, B4, C5, B4, A4.

A musical staff with a treble clef on the top line and a bass clef on the bottom line. The notes are: C4, D4, E4, F4, G4, A4, B4, C5, B4, A4.

A musical staff with a treble clef on the top line and a bass clef on the bottom line. The notes are: C4, D4, E4, F4, G4, A4, B4, C5, B4, A4.

NOTE SPEED

Level Two - Low

A musical staff with a treble clef. Five whole notes are placed on the lines of the staff, starting from the bottom line (C) and moving up to the top line (G). Below the first note is the letter 'C', and there are blank lines for the other four notes.

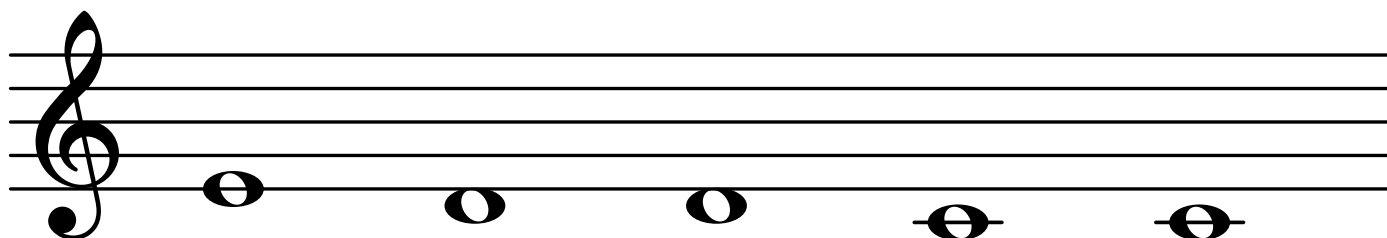
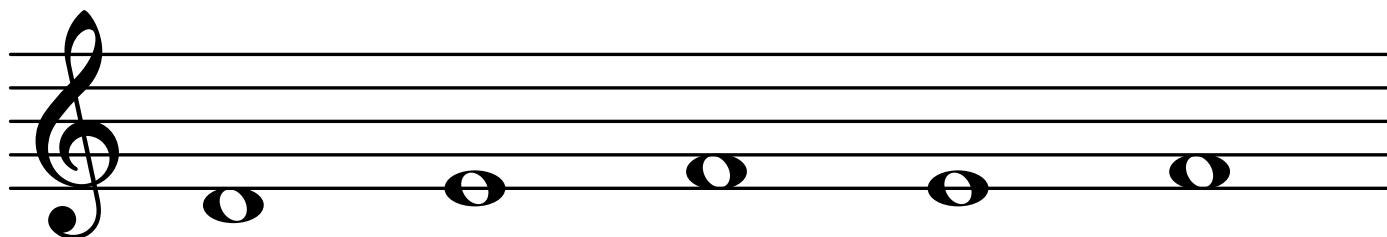
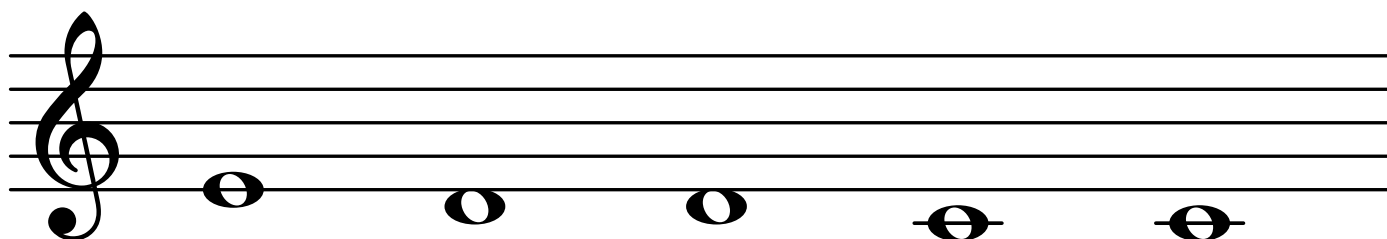
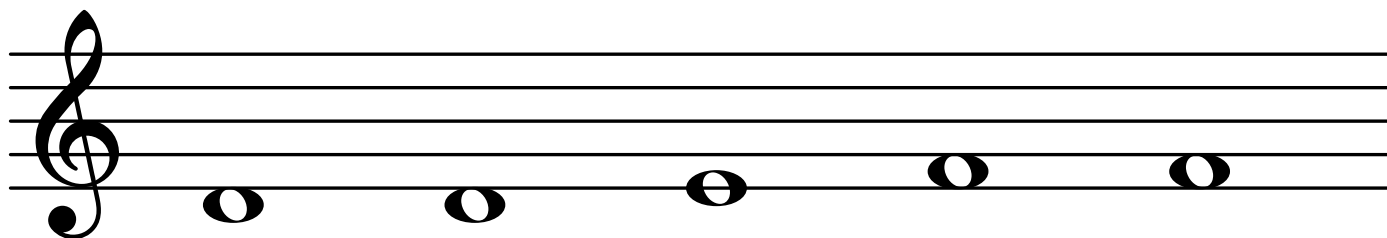
A musical staff with a treble clef. Five whole notes are placed on the spaces of the staff, starting from the bottom space (D) and moving up to the top space (A). There are blank lines below the staff for labeling.

A musical staff with a treble clef. Five whole notes are placed on the lines and spaces of the staff, starting from the bottom line (C) and moving up to the top line (G). There are blank lines below the staff for labeling.

A musical staff with a treble clef. Five whole notes are placed on the spaces and lines of the staff, starting from the bottom space (D) and moving up to the top space (A). There are blank lines below the staff for labeling.

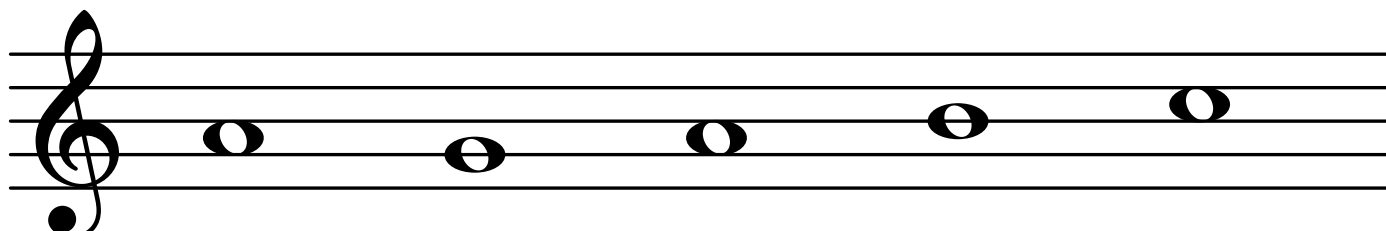
NOTE SPEED

Level Two - Low

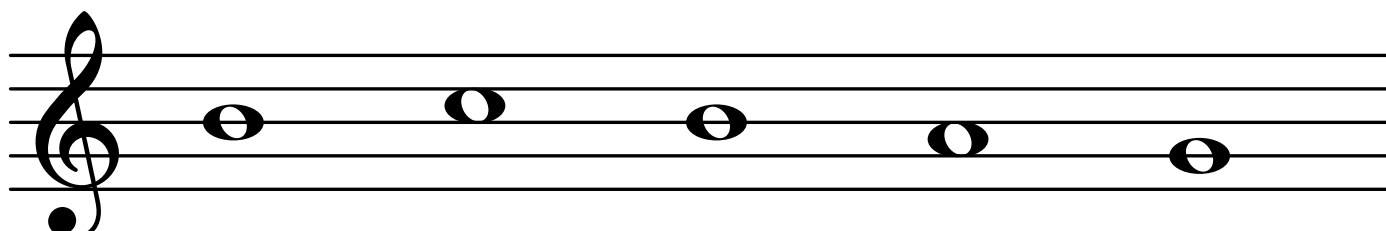


NOTE SPEED

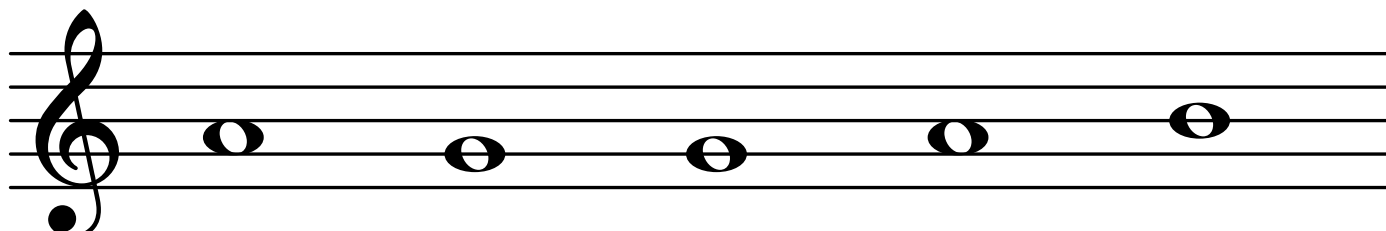
Level Two - High



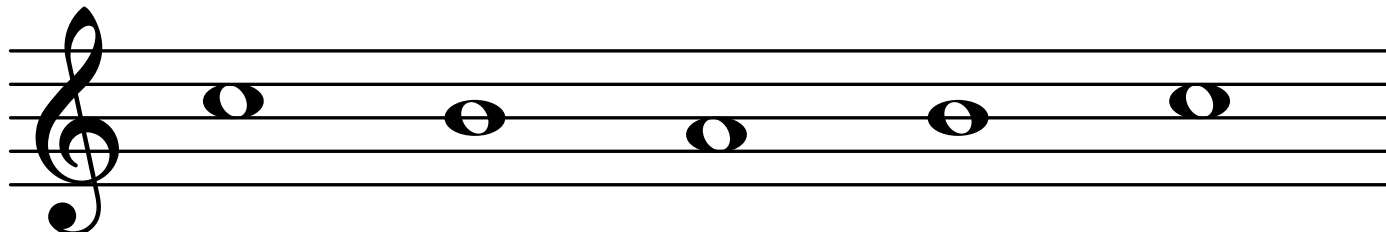
A musical staff in treble clef containing five whole notes. The notes are A (first line), B (second line), C (third line), D (fourth line), and E (fifth line). Below the staff, the letter 'A' is written under the first note, followed by four blank lines for labeling the remaining notes.



A musical staff in treble clef containing five whole notes. The notes are F (first space), G (second space), A (third space), B (fourth space), and C (fifth space). Below the staff, there are five blank lines for labeling the notes.



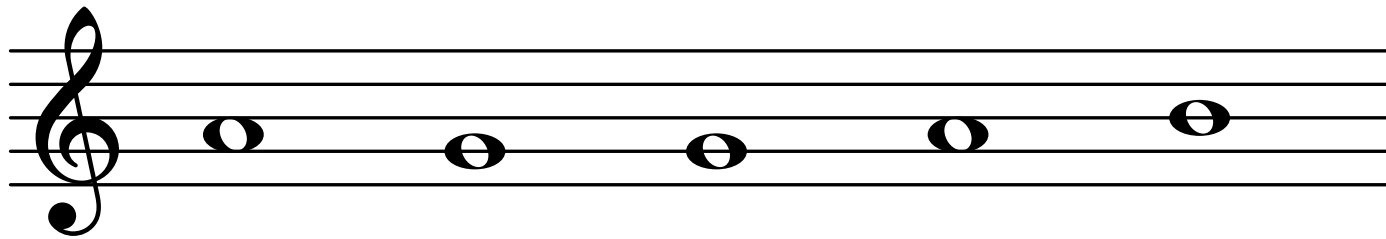
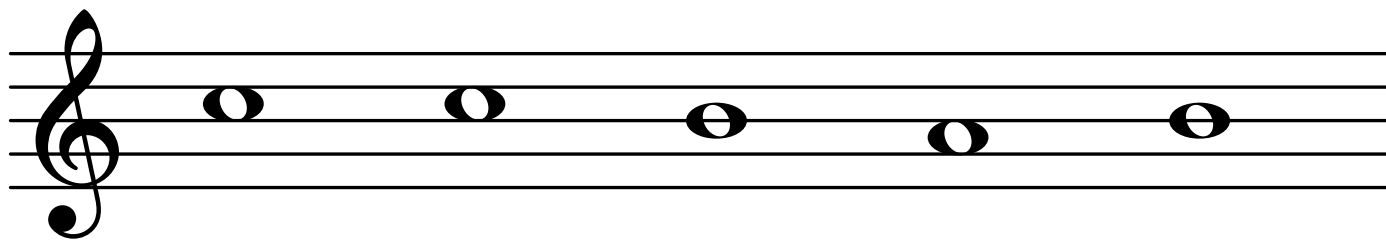
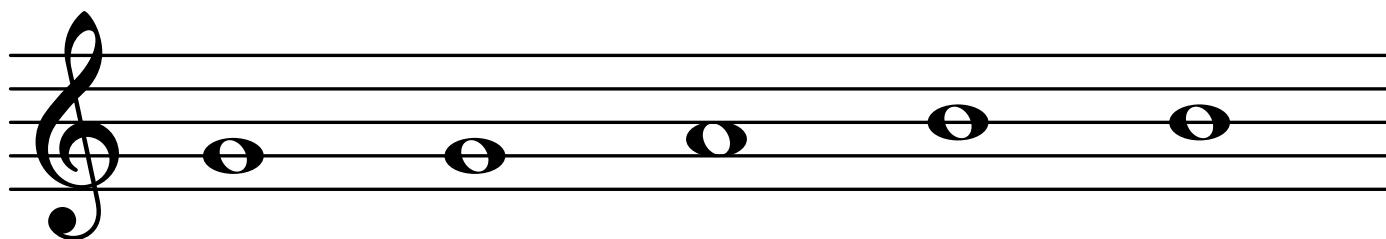
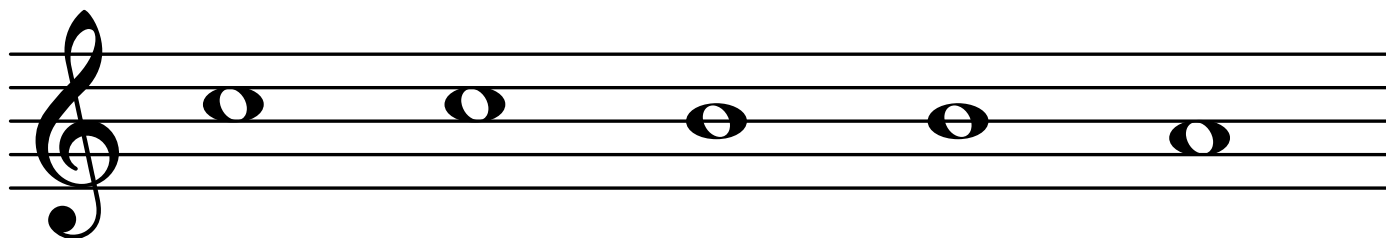
A musical staff in treble clef containing five whole notes. The notes are D (fourth line), E (fourth space), F (fifth line), G (first line of the next octave), and A (first space of the next octave). Below the staff, there are five blank lines for labeling the notes.



A musical staff in treble clef containing five whole notes. The notes are B (fifth line), C (first line of the next octave), D (first space), E (first space), and F (first space). Below the staff, there are five blank lines for labeling the notes.

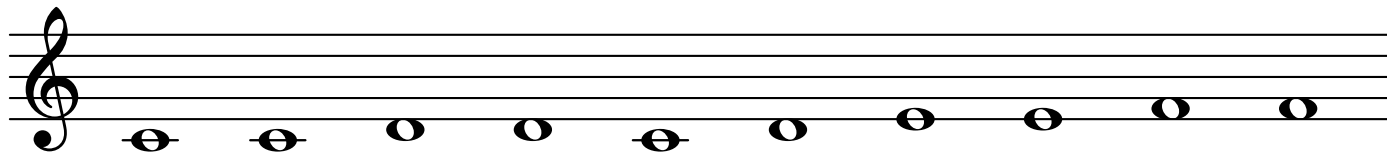
NOTE SPEED

Level Two - High

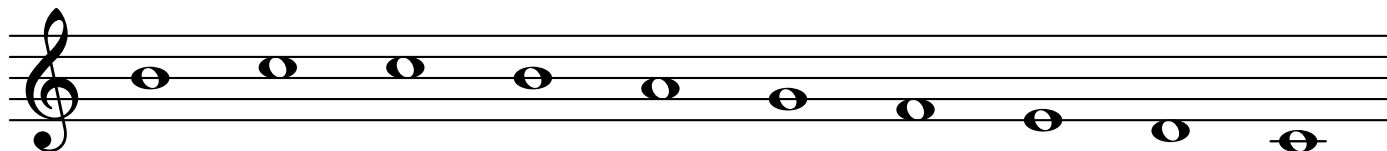
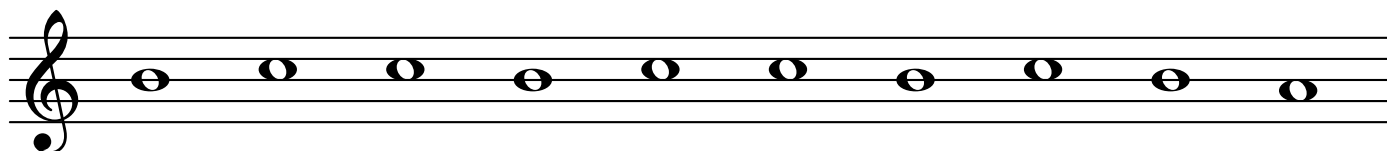
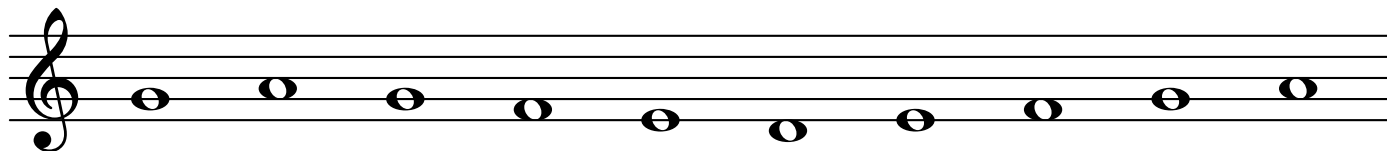


NOTE SPEED

Level Two - Full

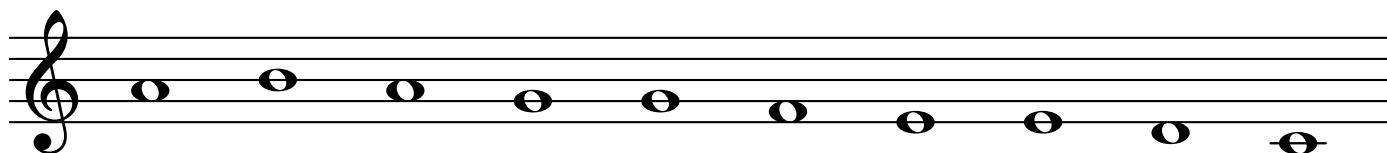
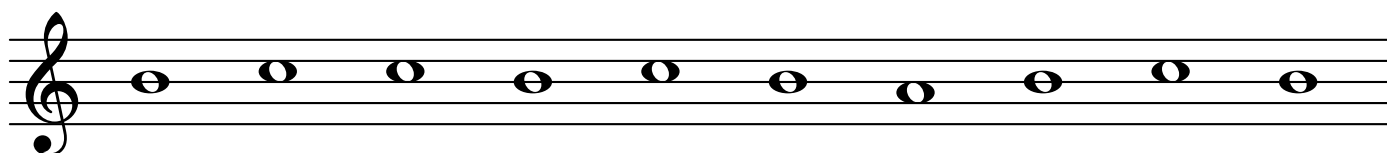
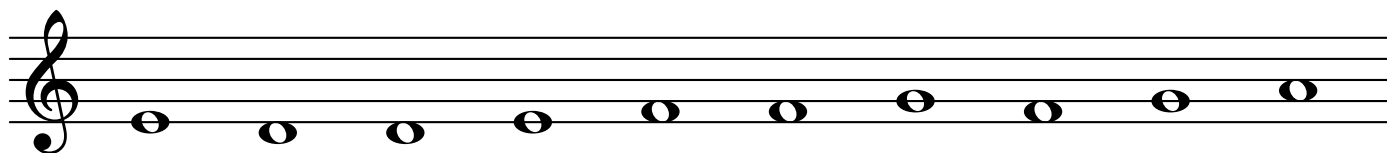
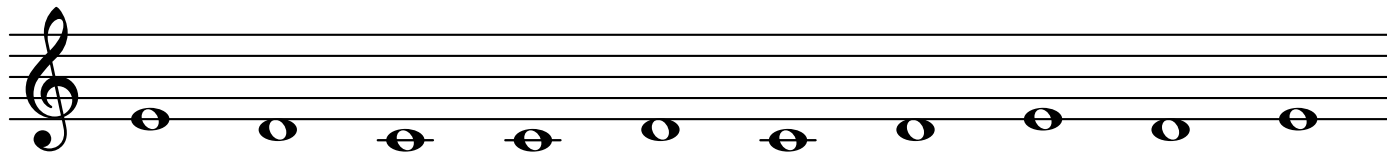


C



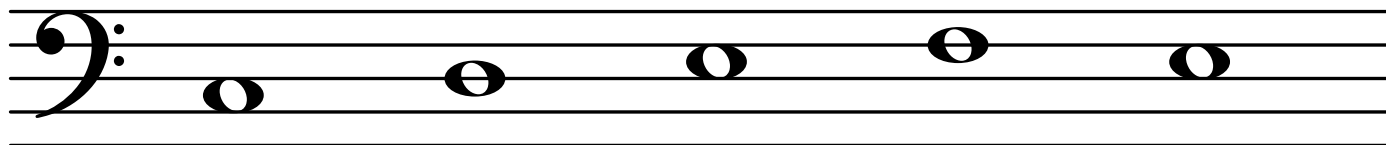
NOTE SPEED

Level Two - Full

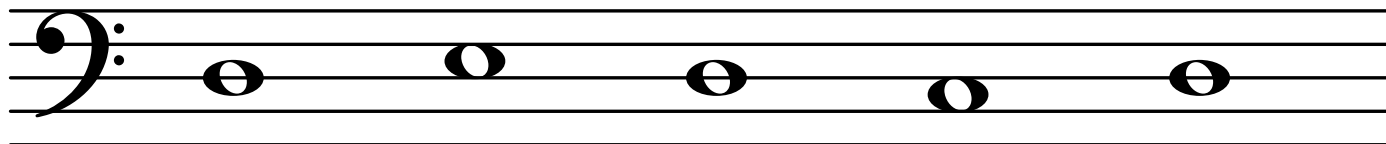
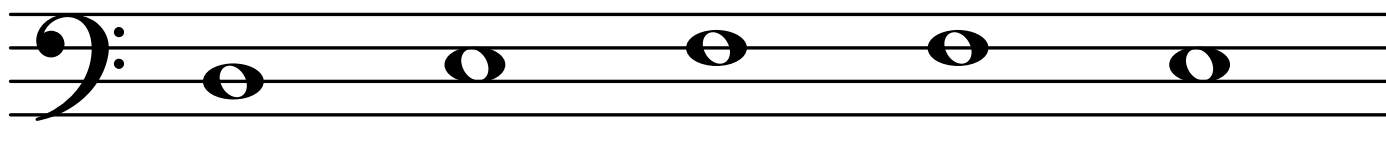
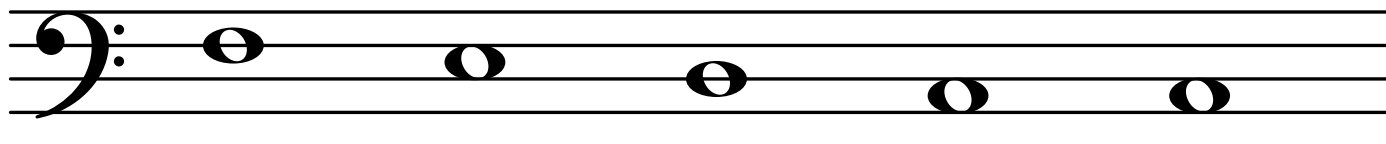


NOTE SPEED

Level Three - Low

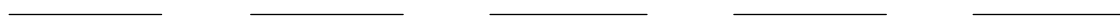
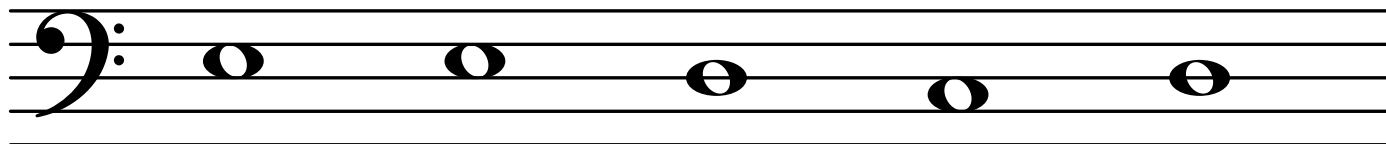
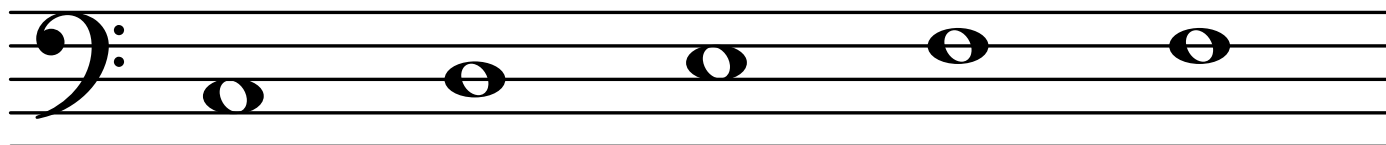
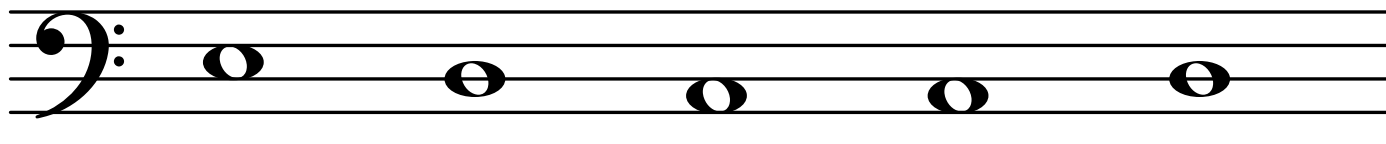
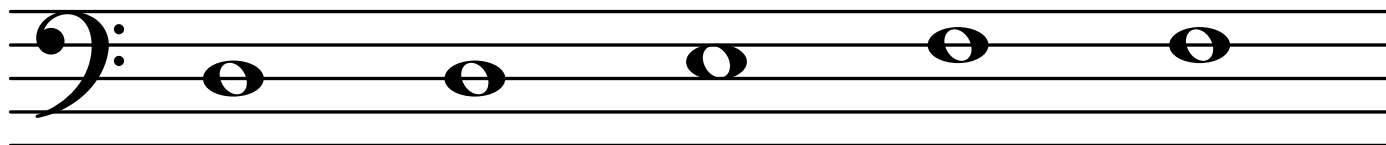


C



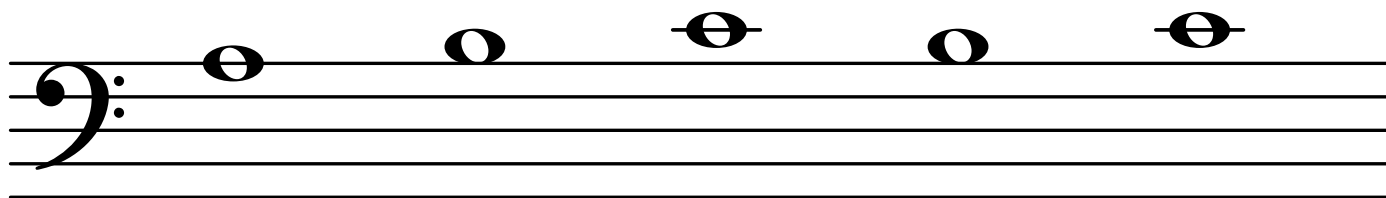
NOTE SPEED

Level Three - Low

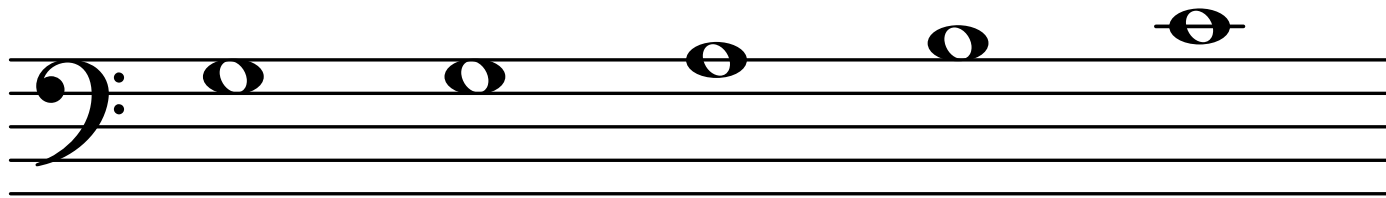
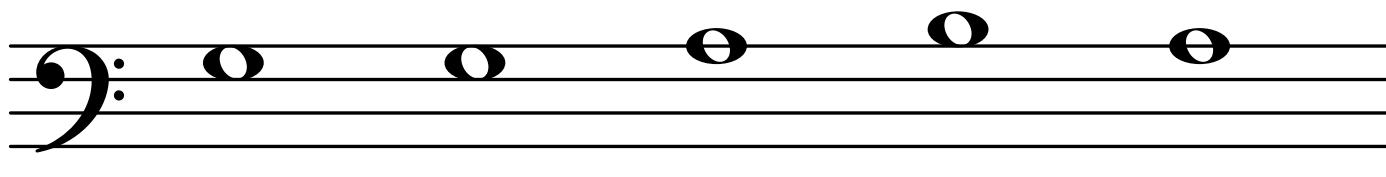
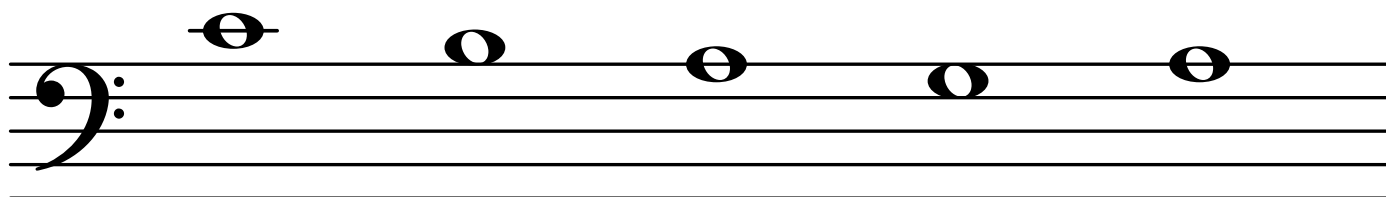


NOTE SPEED

Level Three - High

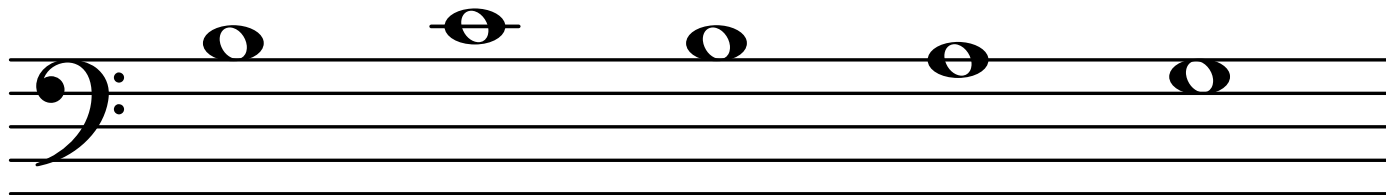
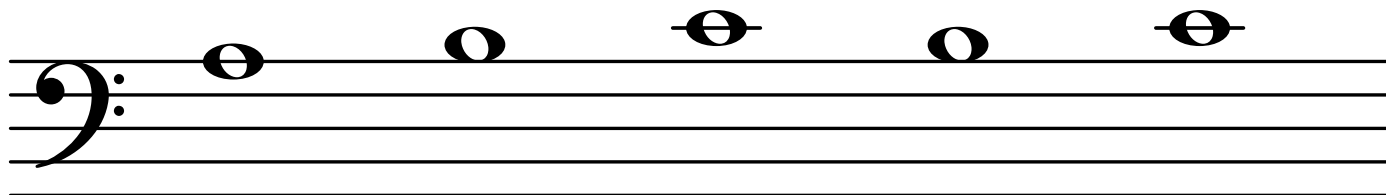
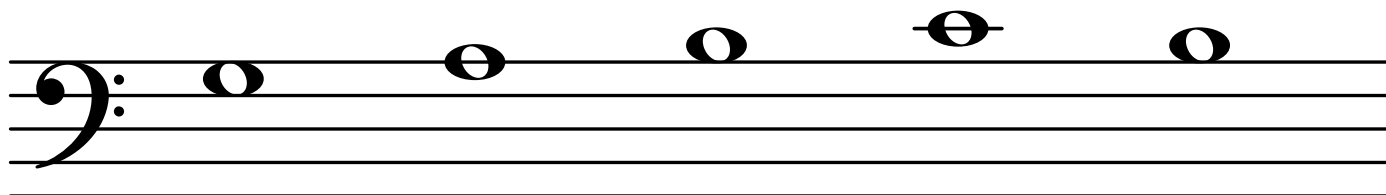
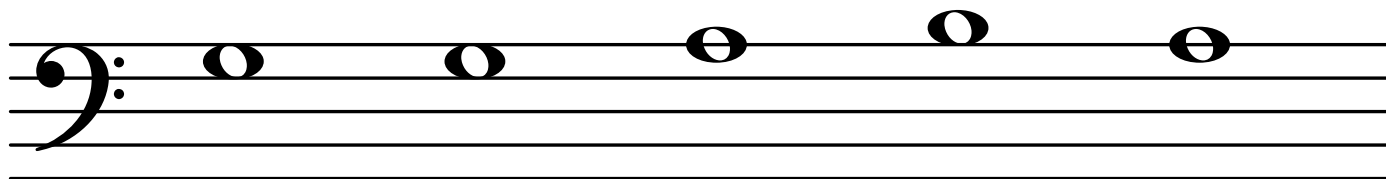


A



NOTE SPEED

Level Three - High

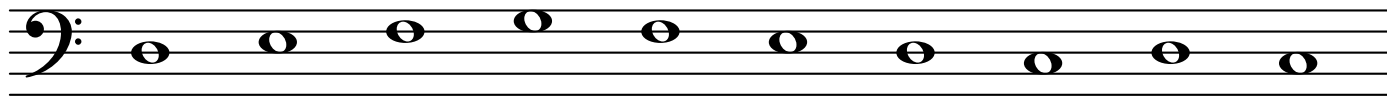
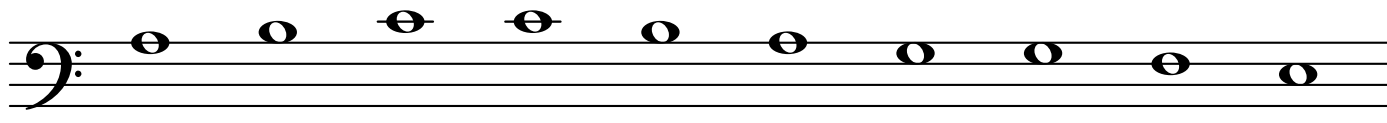
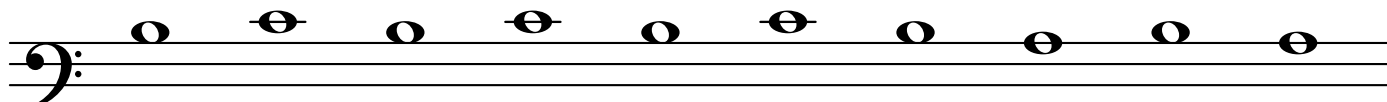


NOTE SPEED

Level Three - Full

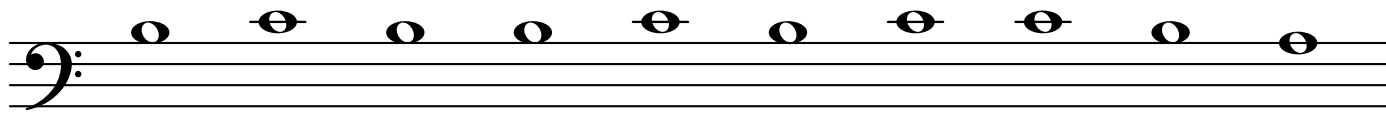
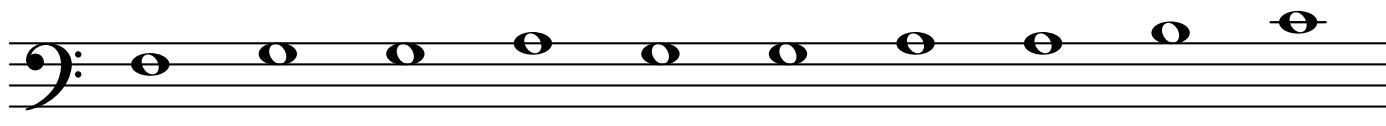
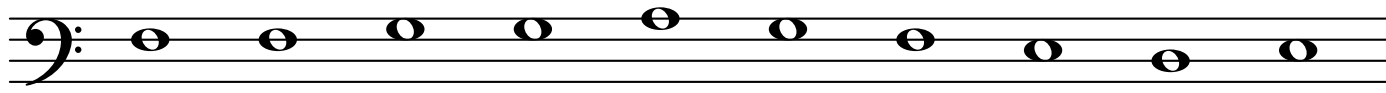


C



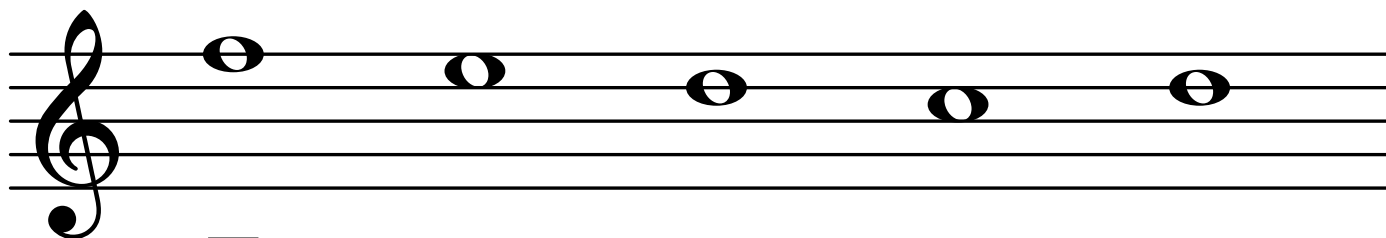
NOTE SPEED

Level Three - Full

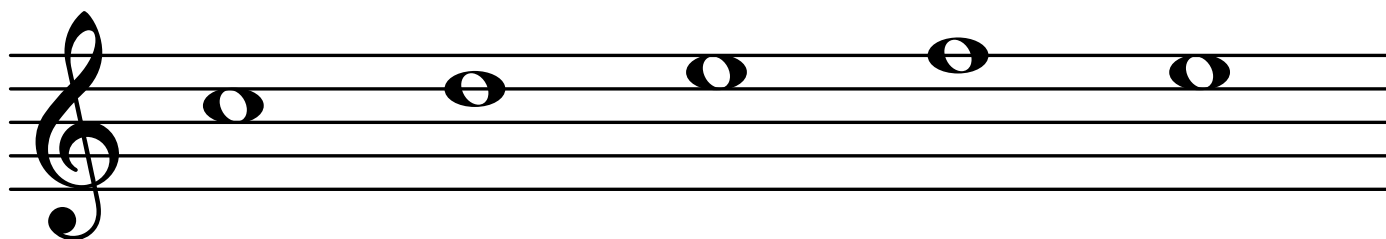


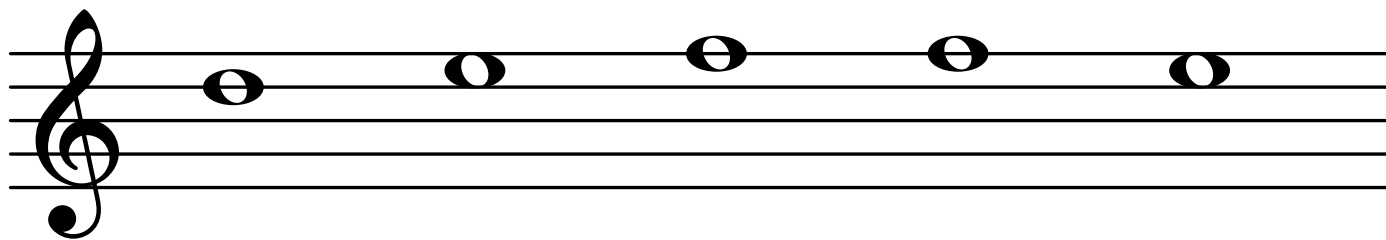
NOTE SPEED

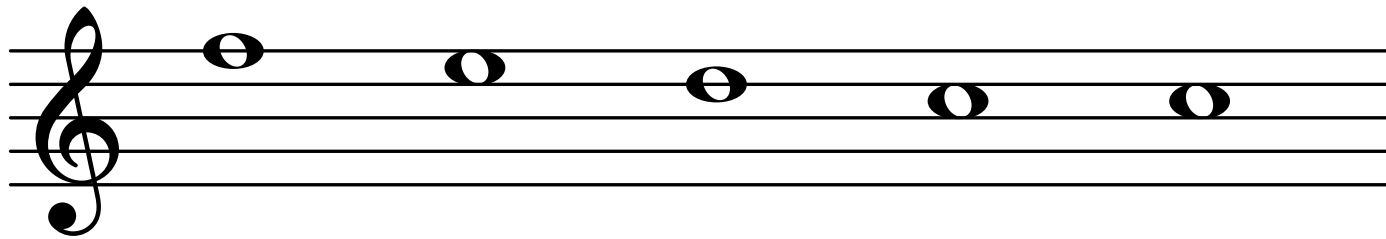
Level Four - Low



F

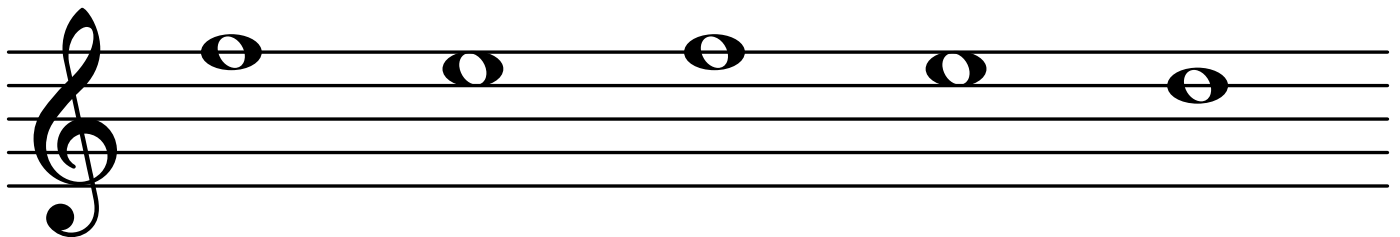
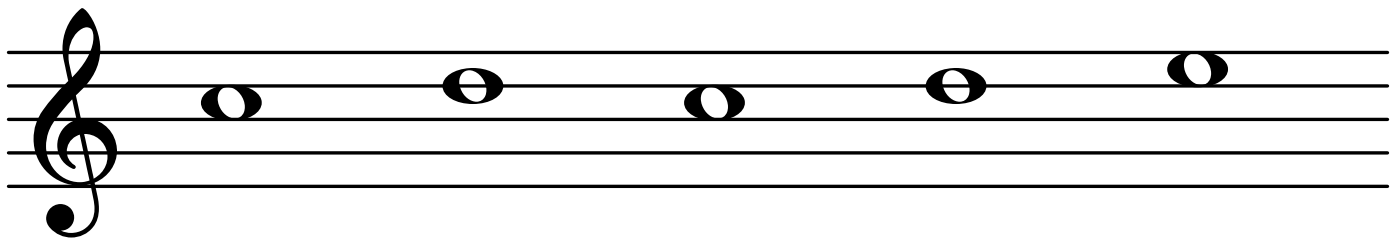
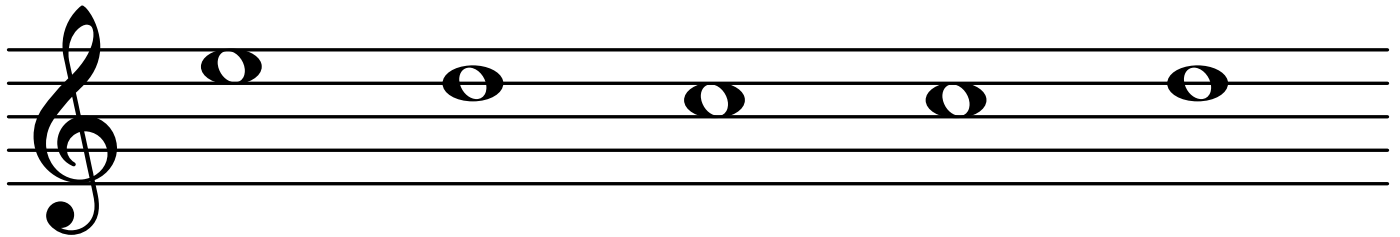
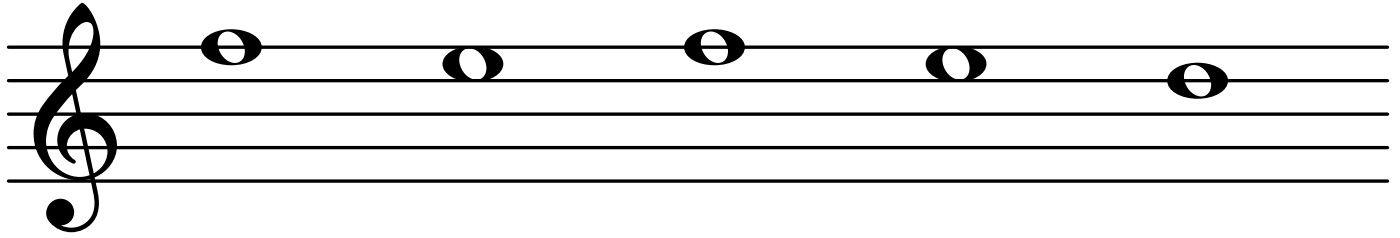






NOTE SPEED

Level Four - Low



NOTE SPEED

Level Four - High

A musical staff with a treble clef. It contains five whole notes on the following lines: G4 (first line), A4 (second line), B4 (third line), C5 (fourth line), and D5 (fifth line).

G

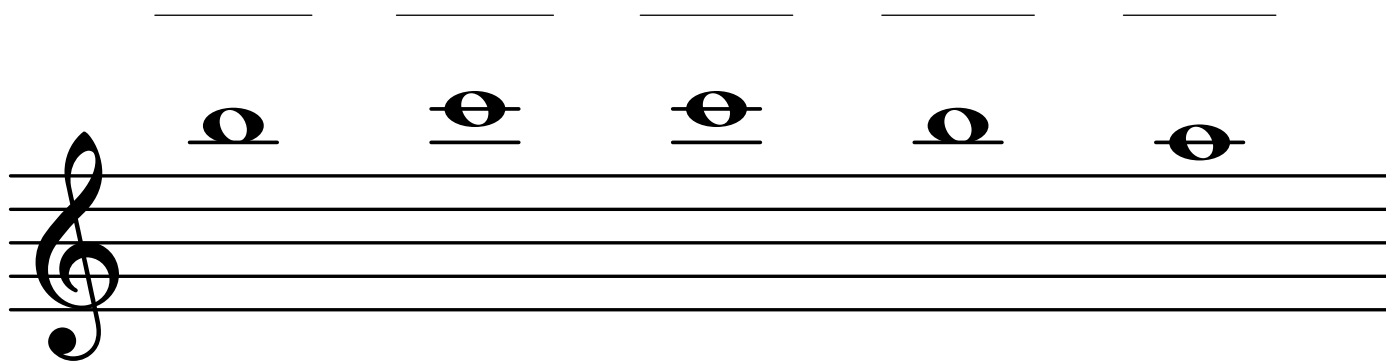
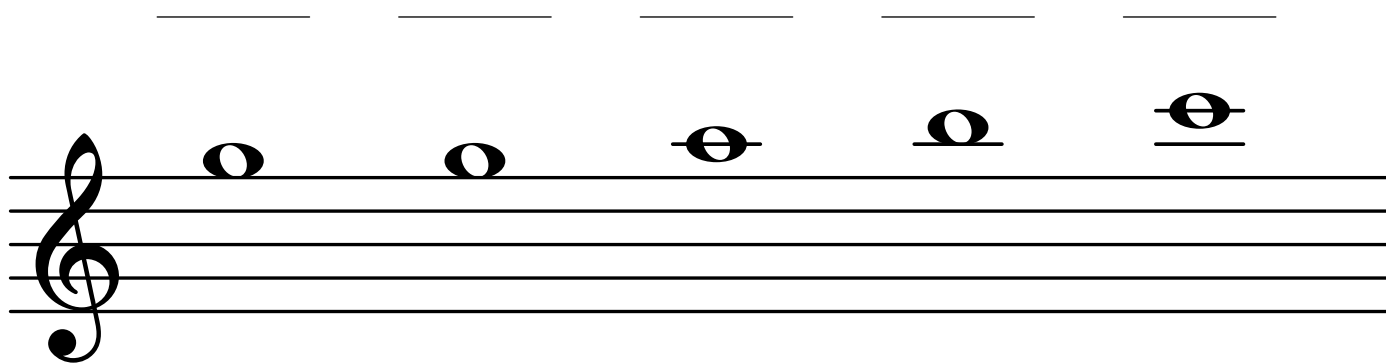
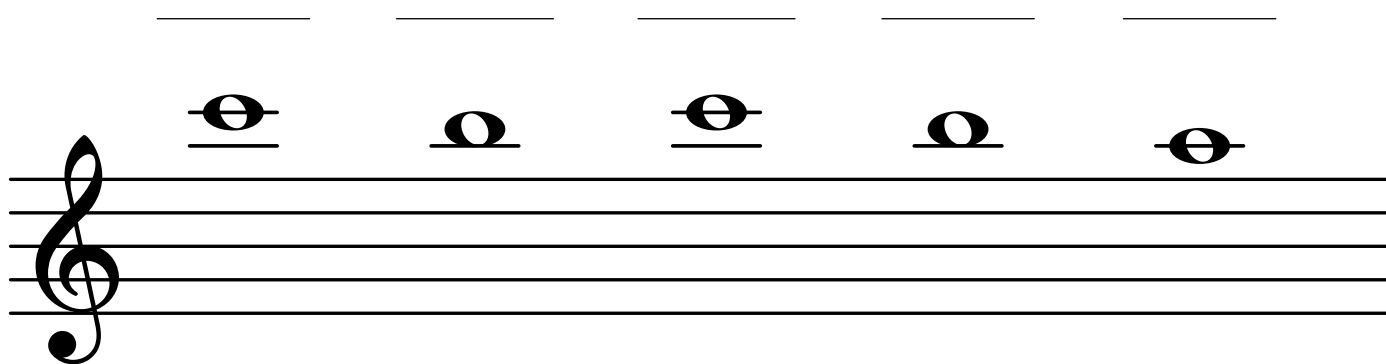
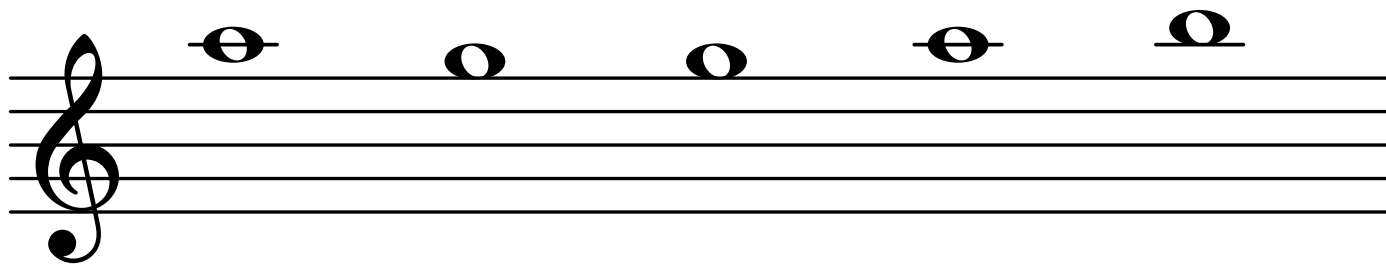
A musical staff with a treble clef. It contains five whole notes on the following lines: E4 (first space), F4 (second space), G4 (third line), A4 (third space), and B4 (fourth line).

A musical staff with a treble clef. It contains five whole notes on the following lines: C5 (fourth space), D5 (fifth line), E5 (first space above the staff), F5 (second space above the staff), and G5 (third space above the staff).

A musical staff with a treble clef. It contains five whole notes on the following lines: A5 (third space above the staff), B5 (fourth space above the staff), C6 (first line above the staff), D6 (second line above the staff), and E6 (third line above the staff).

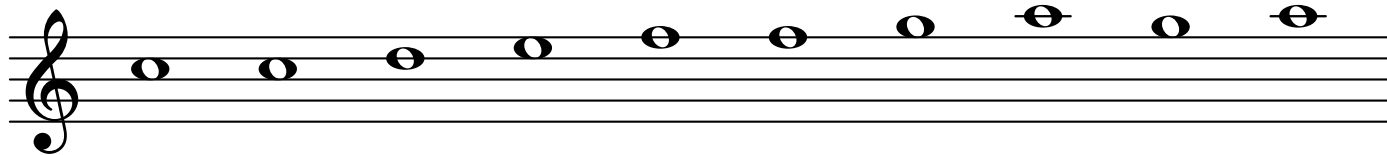
NOTE SPEED

Level Four - High

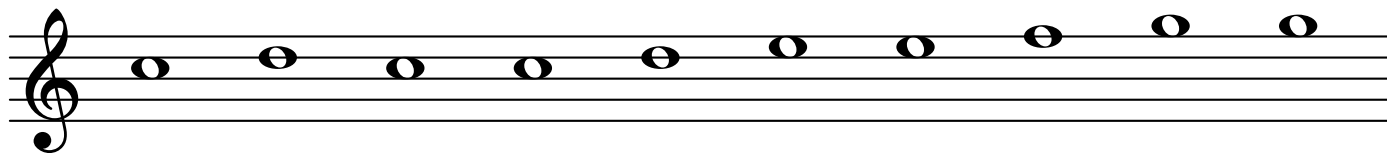
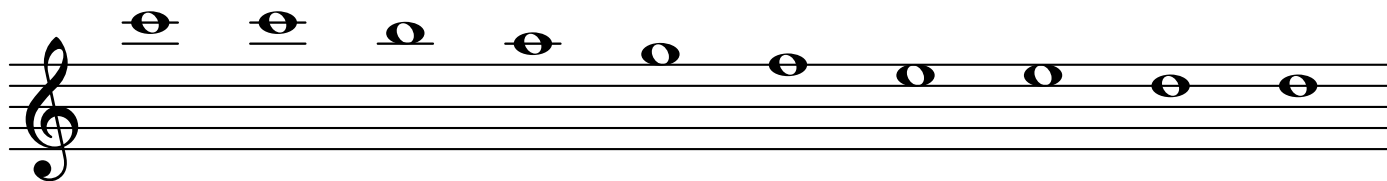
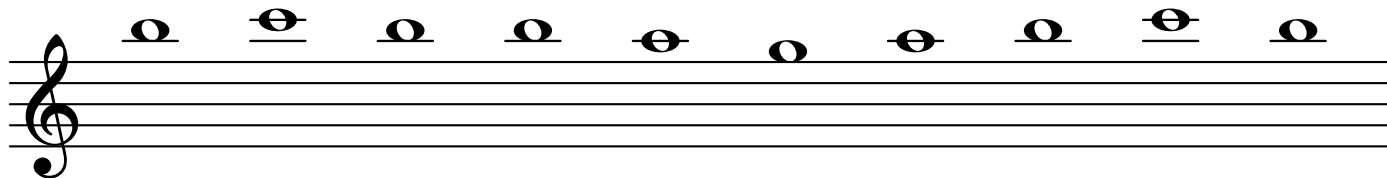


NOTE SPEED

Level Four - Full

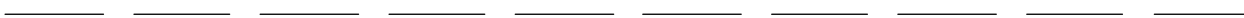
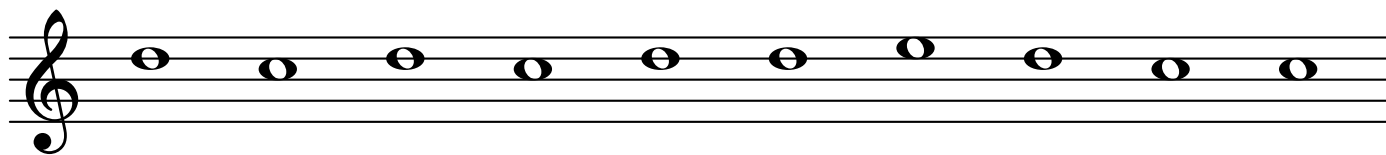
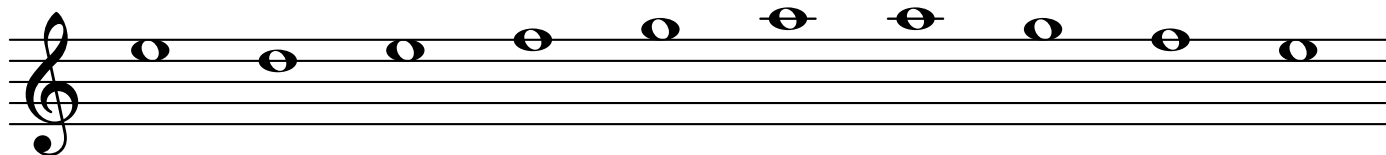
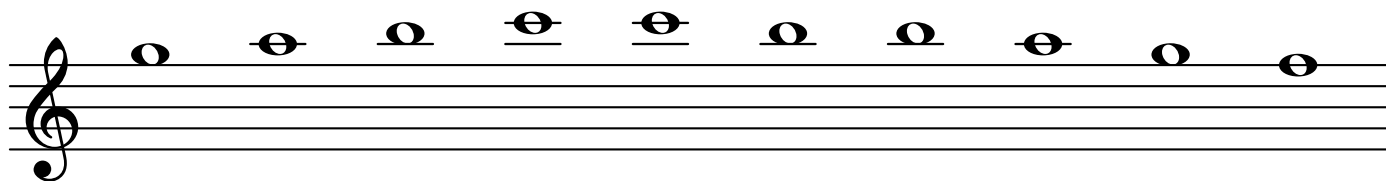
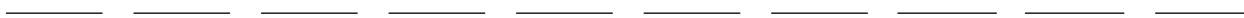
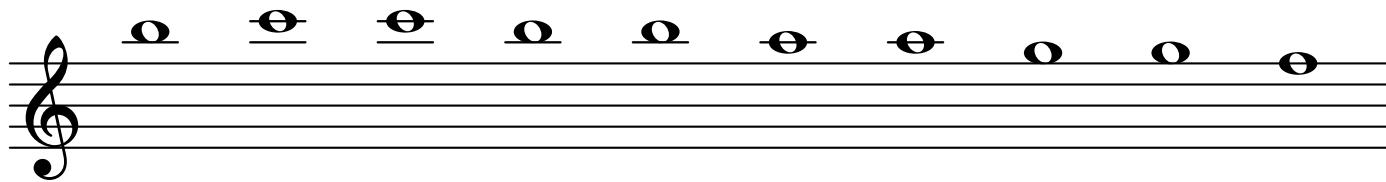


C



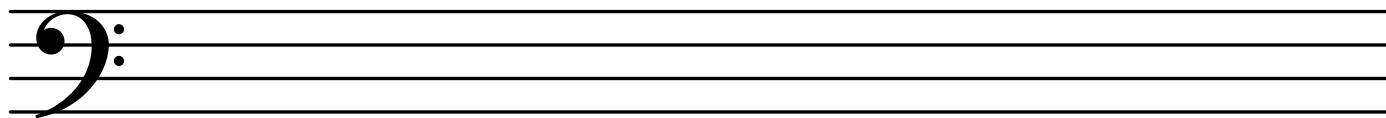
NOTE SPEED

Level Four - Full

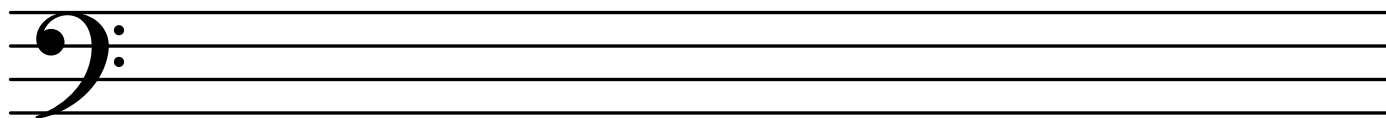
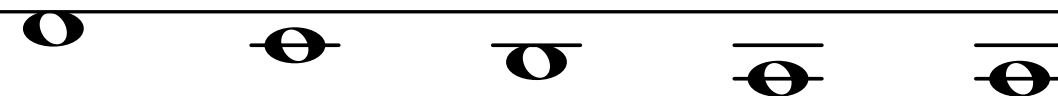
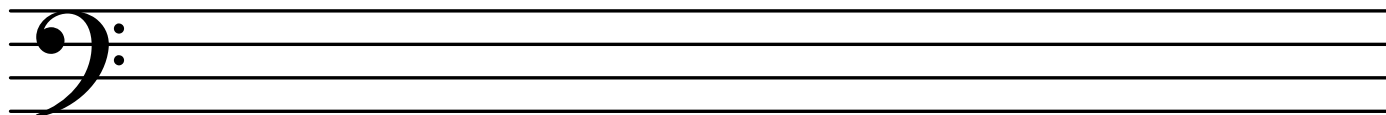
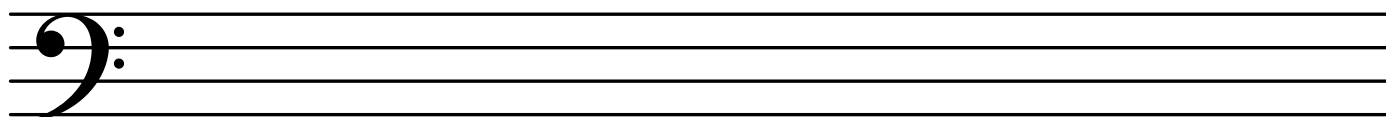


NOTE SPEED

Level Five - Low

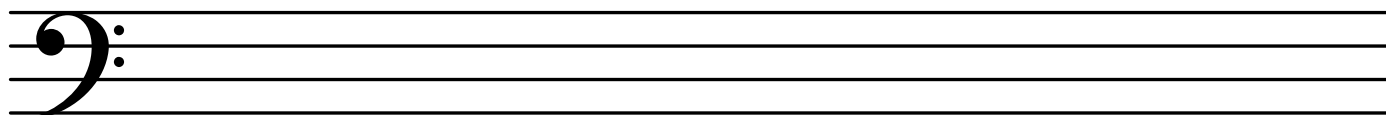
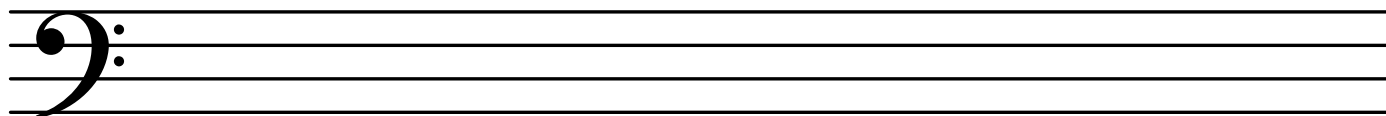
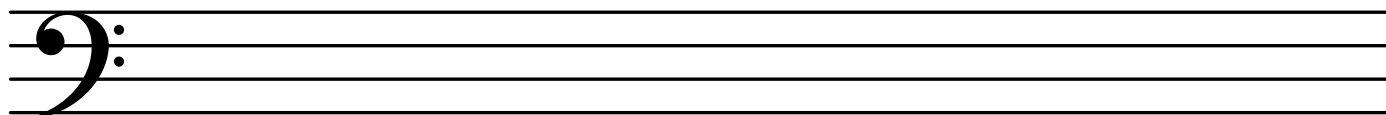
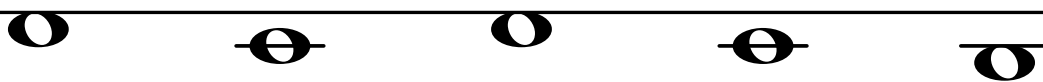
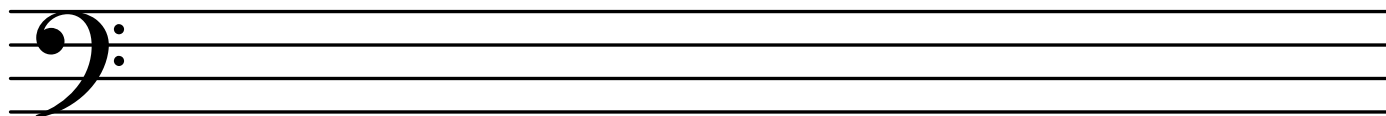


C



NOTE SPEED

Level Five - Low



NOTE SPEED

Level Five - High

A musical staff with a bass clef. It contains five whole notes: G (on the second line), A (on the second space), B (on the third line), C (on the third space), and D (on the fourth line). Below the staff, there are five horizontal lines for labeling the notes. The first line is labeled with the letter 'G'.

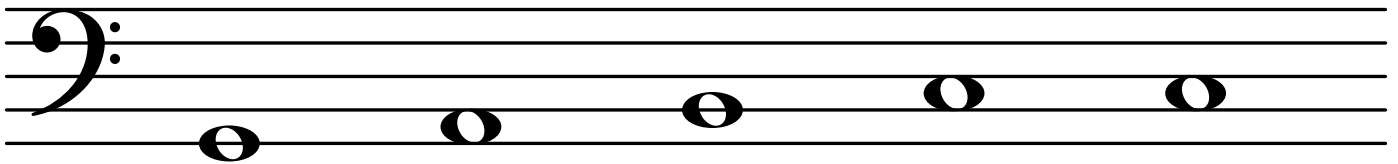
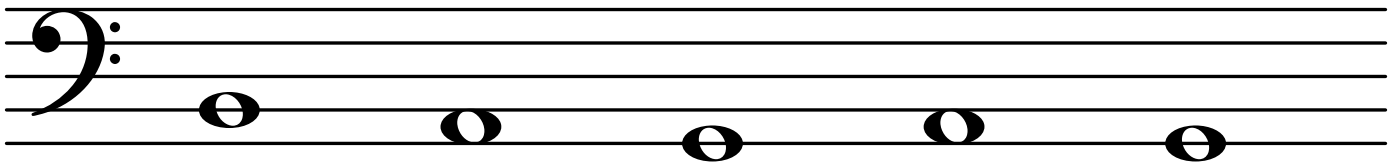
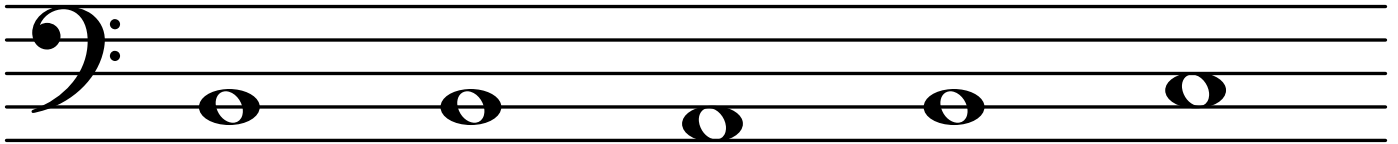
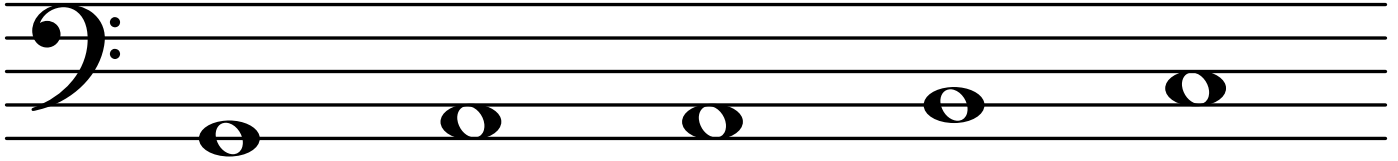
A musical staff with a bass clef. It contains five whole notes: E (on the first space), F (on the second line), G (on the second space), A (on the third line), and B (on the third space). Below the staff, there are five horizontal lines for labeling the notes.

A musical staff with a bass clef. It contains five whole notes: C (on the first line), D (on the first space), E (on the second line), F (on the second space), and G (on the third line). Below the staff, there are five horizontal lines for labeling the notes.

A musical staff with a bass clef. It contains five whole notes: A (on the second space), B (on the third line), C (on the third space), D (on the fourth line), and E (on the fourth space). Below the staff, there are five horizontal lines for labeling the notes.

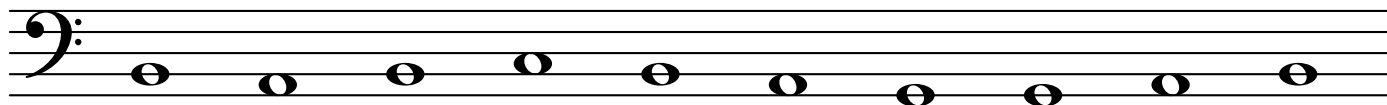
NOTE SPEED

Level Five - High

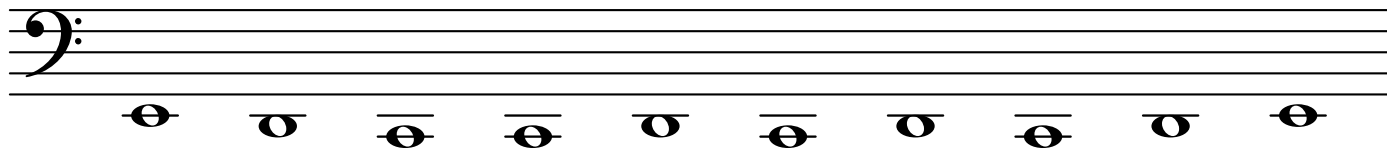
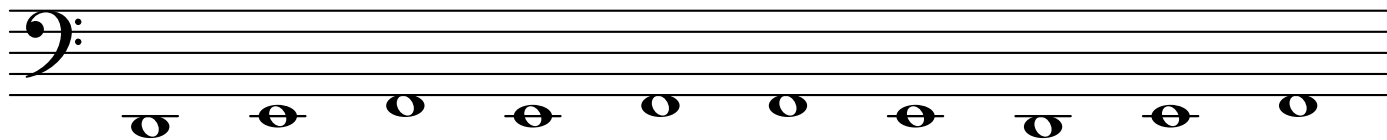
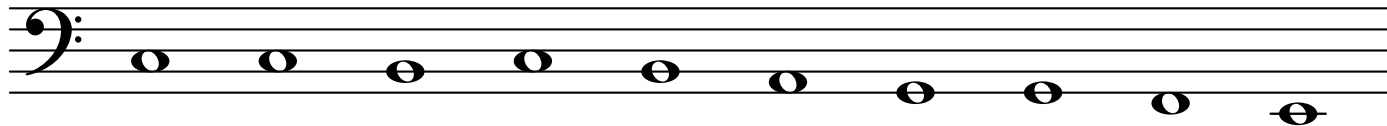


NOTE SPEED

Level Five - Full

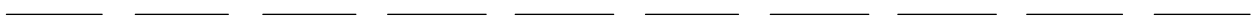
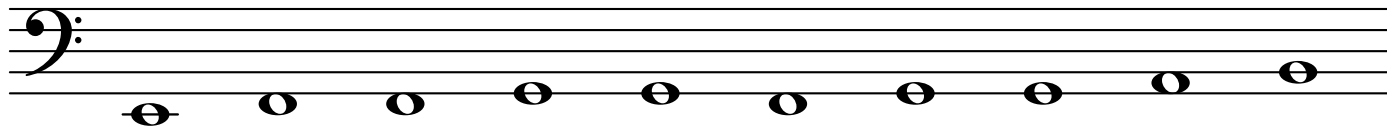
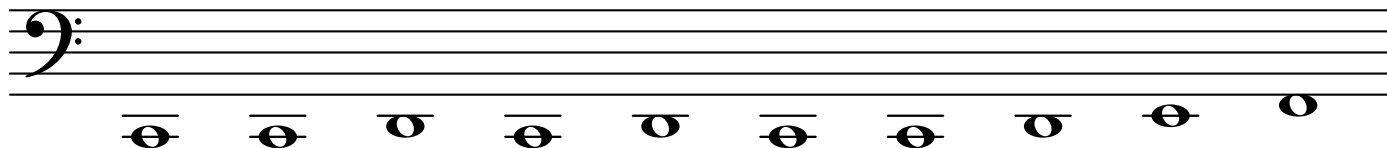
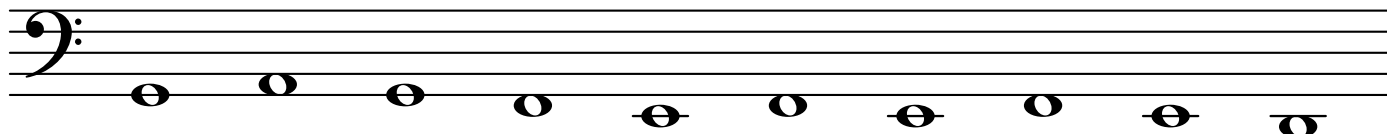
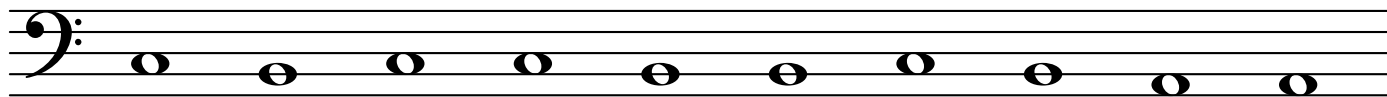


B



NOTE SPEED

Level Five - Full



NOTE SPEED

Level Six - Full

A musical staff with a treble clef on the top line and a bass clef on the bottom line. It contains ten whole notes: G4, A4, B4, C5, D5, E5, F5, G5, A5, and B5.

G

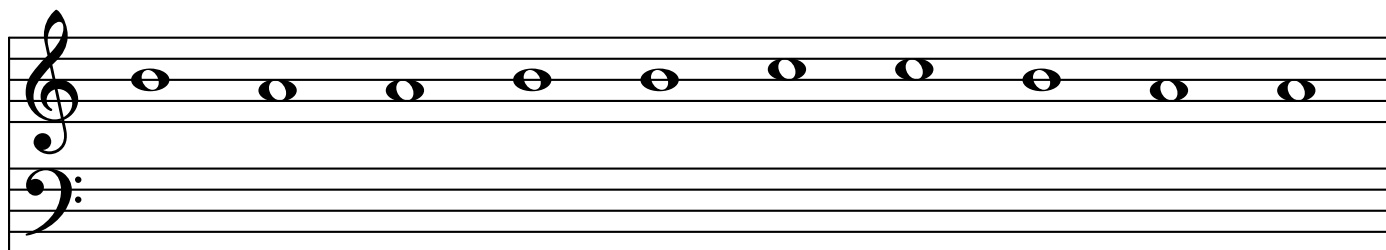
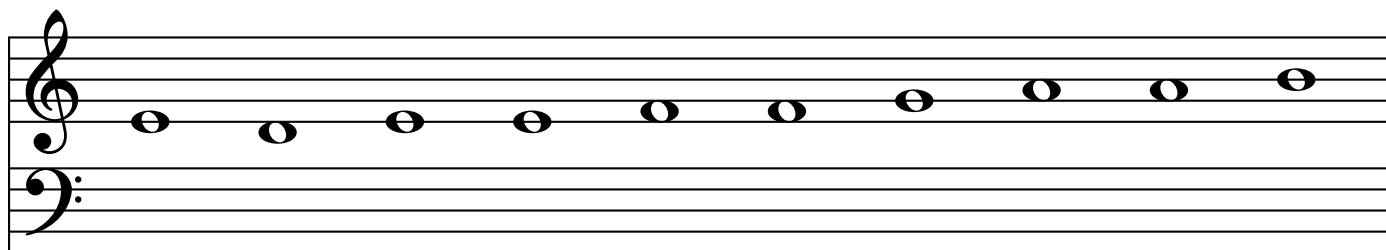
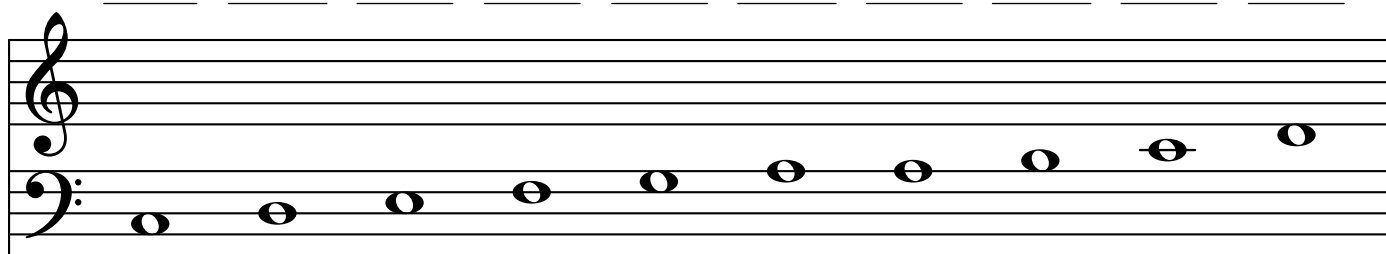
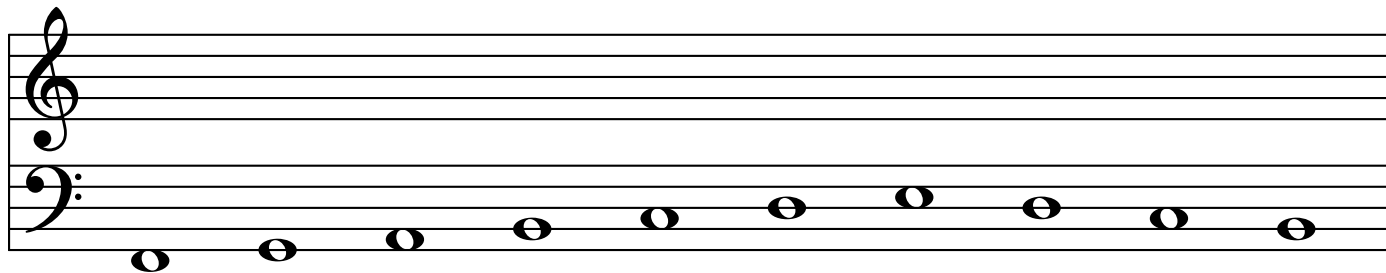
A musical staff with a treble clef on the top line and a bass clef on the bottom line. It contains ten whole notes: G4, A4, B4, C5, D5, E5, F5, G5, A5, and B5.

A musical staff with a treble clef on the top line and a bass clef on the bottom line. It contains ten whole notes: G4, A4, B4, C5, D5, E5, F5, G5, A5, and B5.

A musical staff with a treble clef on the top line and a bass clef on the bottom line. It contains ten whole notes: G4, A4, B4, C5, D5, E5, F5, G5, A5, and B5.

NOTE SPEED

Level Six - Full



NOTE SPEED

Level Six - Full

A musical staff with a treble clef on the left and a bass clef on the right. The staff contains a sequence of 12 quarter notes. The notes in the treble clef are G4, A4, B4, C5, B4, A4, G4, F4, E4, D4, C4, and B3. The notes in the bass clef are B3, A3, G3, F3, E3, D3, C3, B2, A2, G2, F2, and E2.

B

A musical staff with a treble clef on the left and a bass clef on the right. The staff contains a sequence of 12 quarter notes. The notes in the treble clef are B4, C5, D5, E5, D5, C5, B4, A4, G4, F4, E4, and D4. The notes in the bass clef are B3, A3, G3, F3, E3, D3, C3, B2, A2, G2, F2, and E2.

A musical staff with a treble clef on the left and a bass clef on the right. The staff contains a sequence of 12 quarter notes. The notes in the treble clef are B4, A4, G4, F4, E4, D4, C4, B3, A3, G3, F3, and E3. The notes in the bass clef are B3, A3, G3, F3, E3, D3, C3, B2, A2, G2, F2, and E2.

A musical staff with a treble clef on the left and a bass clef on the right. The staff contains a sequence of 12 quarter notes. The notes in the treble clef are B4, A4, G4, F4, E4, D4, C4, B3, A3, G3, F3, and E3. The notes in the bass clef are B3, A3, G3, F3, E3, D3, C3, B2, A2, G2, F2, and E2.

NOTE SPEED

Level Six - Full

